

# Do Now (7 min)

## Table of Contents: **Creating Maps** pg. 1-2

- ✓ Record your response to the **BLUE** questions **on page 1** in your notebook.
- ✓ Write in **COMPLETE SENTENCES!!** Do **NOT** write the questions.
- ✓ Have your **week sheet** ready!
  1. **What is a map? A map is...**
  2. **Why do we use maps? We use maps because...**
  3. **What are the different uses for maps? The different uses for maps are...**
  4. **Can maps save lives? How? Maps can/can not save lives because...**



# OBJECTIVES – 3 MIN

**SS.6.3D Create thematic maps**, graphs, charts, models, and databases **depicting [showing] aspects [features] such as population, disease, and economic activities** of various world regions and countries

**SS.6.4A Locate** various contemporary societies on **maps and globes using latitude and longitude** to **determine absolute location**.

**SS.6.21C Organize and interpret information** from outlines, reports, databases, and visuals, including graphs, charts, timelines, and **maps**.

**SS.6.21F Use appropriate mathematical skills** to **interpret** social studies **information** such as **maps** and graphs

# HOT Question

- ❖ What are the key elements of a map?
- ❖ How are these elements useful?

## Essential Understanding

Graphic representations of information and data often **express relationships and patterns** in the **physical and human geography** of a place/region.

**21<sup>st</sup> Century Skill**  
**Collaboration**

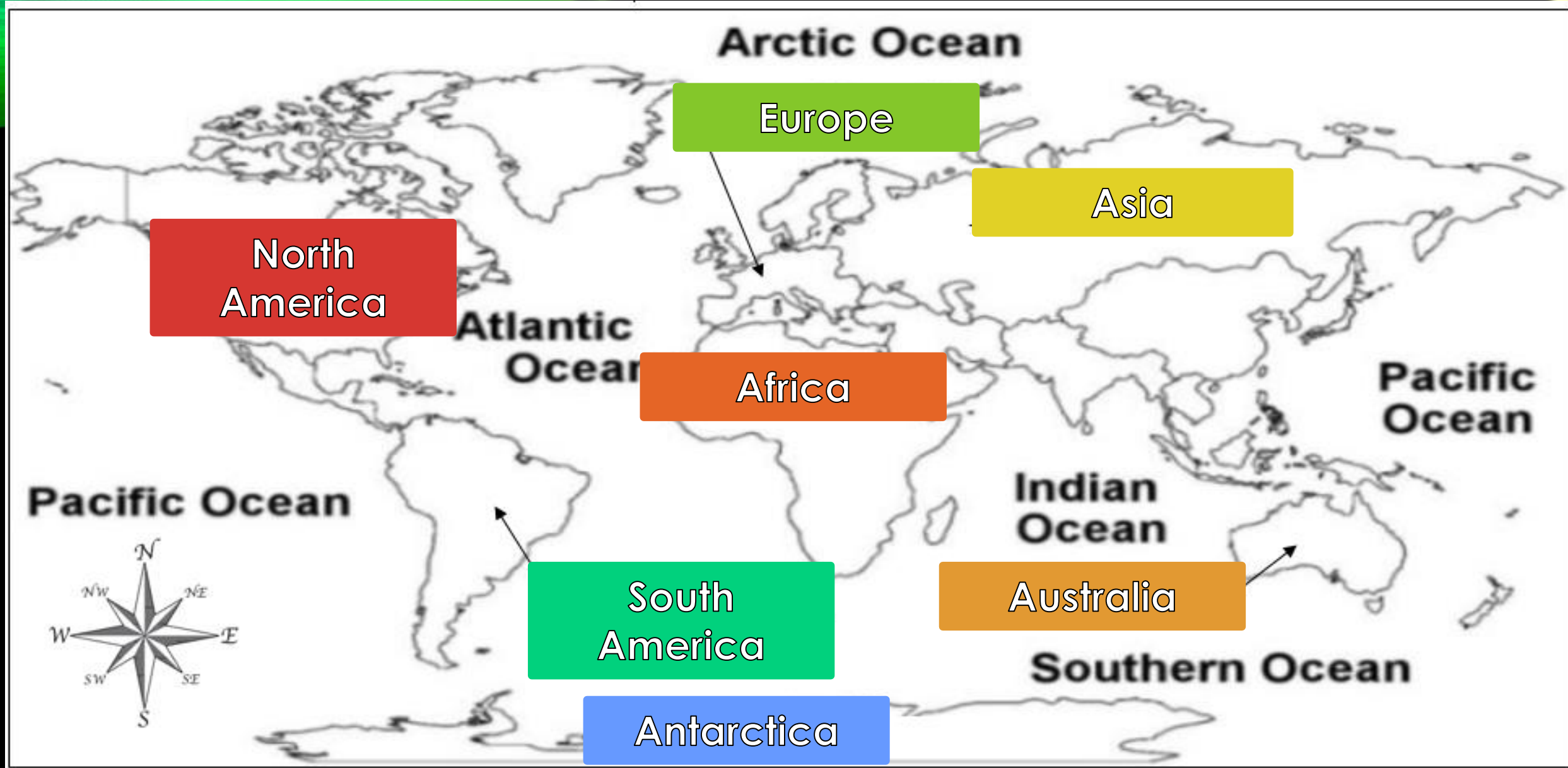


# LOST CONTINENTS

1. **Read each clue** from the *Lost Continent Clue Card*
2. Use your prior knowledge, clues, and the map tool to **identify the lost continent**
3. **Record the name** of the lost continent on the line in the appropriate area of the map
4. Raise your hand once you are done

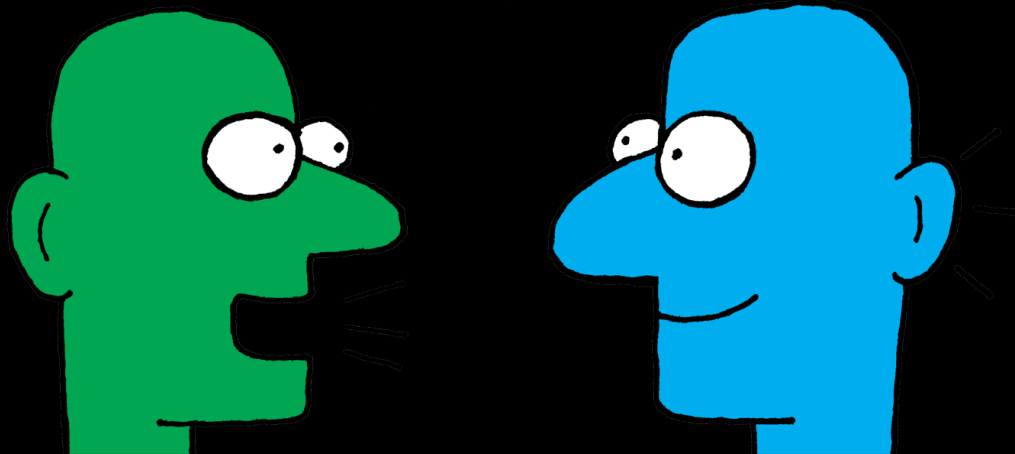






## CHECKPOINT – 4 MIN

1. What is a **continent**?
2. What do you notice about the shape of the **seven continents** on earth?
3. What do you notice about the **oceans**?



# DIRECT INSTRUCTION – 15 MINUTES

## Pre-reading activity:

Scan the text to get an idea of what we will read today. Be prepared to share out. Pay close attention to headings and bold words.

### Key Elements of Maps

**Maps** are graphic representations of places that use point, line, and area symbols, as well as color, to show how human and physical features are located and related to one another. No single map can show everything, so the features shown on each map are selected to fit a purpose. A useful map should tell you what it is about, which direction north is, when the map was made or updated, who made the map, what the symbols mean, how distances on the map relate to distances on the ground, where to find selected places on the map, how to find places on the map, and where the map's information comes from. However, not all maps will show this information. The more information given, the better you will be able to evaluate the contents of the map, how credible [trustworthy] the map is, and whether it should be used for a specific reason.

#### **TODALSIG**

There are several important elements that are included in most maps. The acronym

**TODALSIG**—which lists the map elements in order of importance—can be used to help you remember each part. (Note: the acronym **DOGTAILS** is sometimes used to help us remember the key elements of a map easier.)

**Title:** Text explaining what the map is supposed to show: what is happening, where, and when.

**Orientation:** In most cases, the direction “north” is at the top of a map. A north arrow is a symbol indicating the direction in which north lies; a compass rose is a symbol that shows the cardinal directions (North, South, East, West), and in some maps, intermediate directions (Northeast, Northwest, Southeast, Southwest).

**Date:** When the map was made and/or updated.

**Author:** Text identifying the cartographer or organization responsible for making the map.



### KEY ELEMENTS OF A MAP

What is it?	What does it mean?	What does it look like?
Title		
Orientation		
Date		
Author		
Legend/Key		
Scale		
Index		
Grid		

#### WHAT WOULD YOU DO?—A Mapping Scenario

You are heading down the highway to your favorite restaurant (burgers anyone?) when all of a sudden—YOUR CAR COMPLETELY RUNS OUT OF GAS! Unfortunately, you've inconveniently left your cell phone at home and all you have is a map of the city, a gas can, and cash in your pocket. Given your current circumstances and the resources that are currently available to you, how would you:

- 1.) Determine where you are?
- 2.) Determine how far the nearest gas station is from your current location?
- 3.) Determine the direction that you would need to go in order to get to the gas station?

# CHECKPOINT – 3 MIN

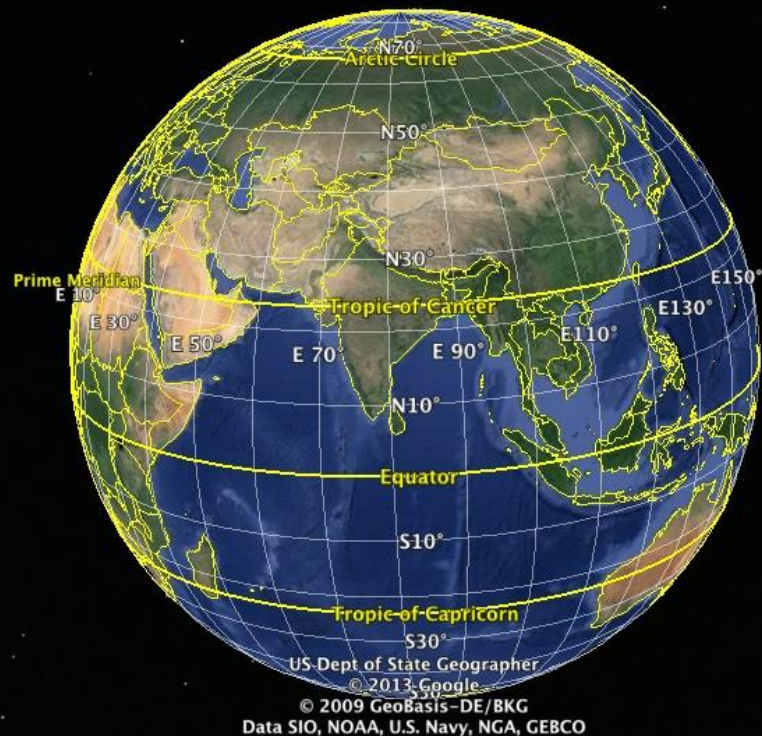
1. What are the **key elements** of a map?
2. How can each of these key points be **used**?



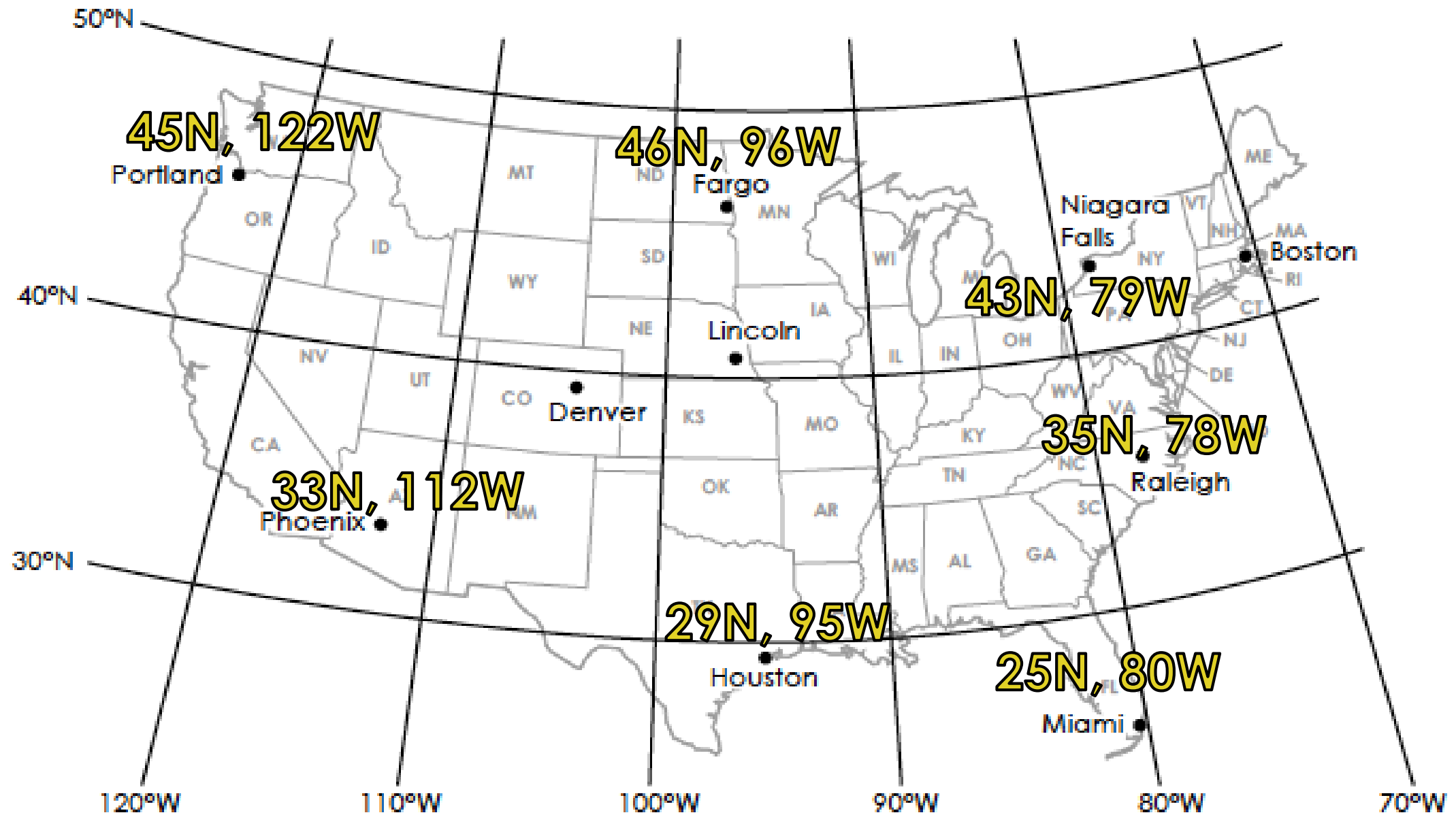


# GUIDED PRACTICE – 13 MINUTES

## Reading Latitude and Longitude



1. What are lines of **latitude**?
2. What are lines of **longitude**?
3. Which is written **first** when identifying absolute location?





## CHECKPOINT – 3 MIN

1. What is the **equator**?
2. What is the **prime meridian**?
3. What **key element** of the map do you use to find **absolute location**?
4. Is knowing how to find **absolute location important**? Why or why not?
5. How is finding **absolute location related to math**?

# TEAMWORK

1. On your chart paper, you are going to **create a map** of the ideal city.
2. Your map must **include all key elements**.
  - A Title
  - Compass Rose
  - Today's date
  - The authors of the map
  - A Legend
  - A scale
  - An index with, at least, 2 locations
  - A grid system





# ANALYZING MAPS – 5 MIN

1. **Post your map** around the room.
2. Using the Map Evaluation Sheet **analyze 3 maps.**

Map Evaluation Sheet			
ELEMENTS	Map 1	Map 2	Map 3
Title			
Orientation			
Date			
Author			
Legend/Key			
Scale			
Index			
Grid			

## **HOT** Question

Record your answer on **page 2** of your notebook

**What are the key elements of a map?**

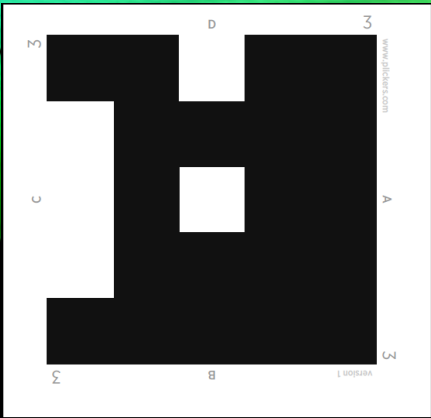
*The key elements of a map are...*

**What strategy can you use to remember the elements of the map?**

*The strategy to remember key elements of a map is...*

**Which key elements are most important?**

*The most important elements are... because...*

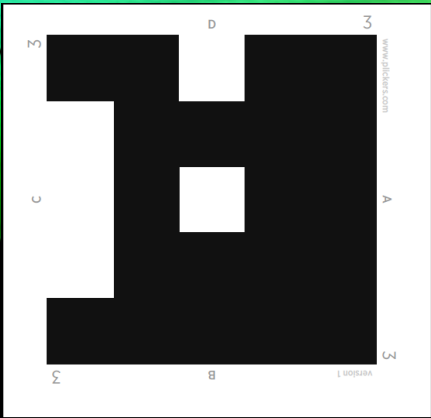


# Exit Ticket

## Pickers!!!

Use the handout of the map to answer the following questions.

1. What is the absolute location for Sydney Australia?
  - A.  $34^{\circ}\text{S}$ ,  $150^{\circ}\text{E}$
  - B.  $29^{\circ}\text{S}$ ,  $145^{\circ}\text{E}$
  - C.  $150^{\circ}\text{S}$ ,  $34^{\circ}\text{W}$
  - D.  $34^{\circ}\text{N}$ ,  $150^{\circ}\text{W}$

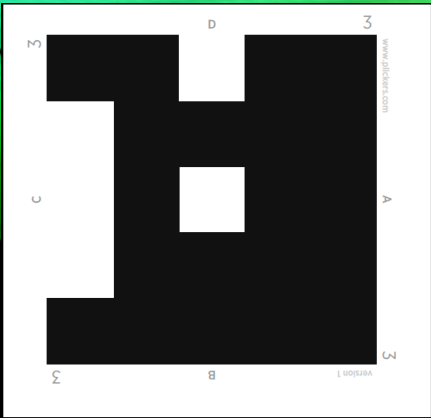


# Exit Ticket Pickers!!!

Use the handout of the map to answer the following questions.

2. Which city located at 32°S, 117°E?
- A. Sydney
  - B. Alice Springs
  - C. Perth
  - D. Menzies





# Exit Ticket

## Pickers!!!

Use the handout of the map to answer the following questions.

3. What map element is missing from the map?
- A. Title
  - B. Date
  - C. Legend
  - D. Scale